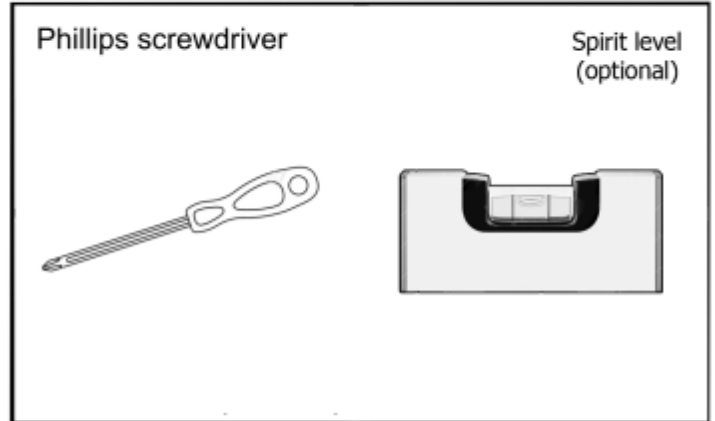
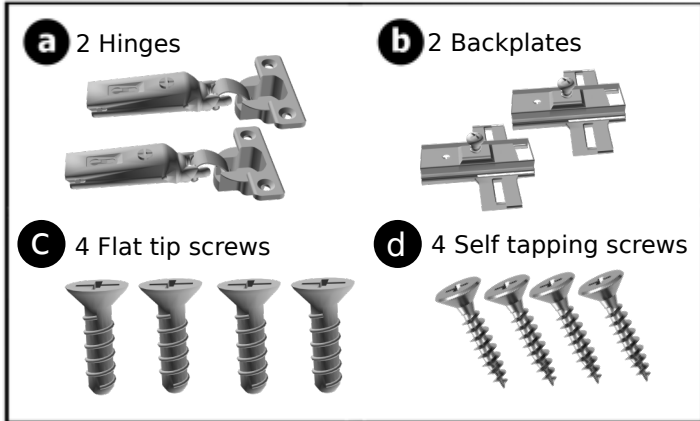


Before you begin, please read the assembly instructions in full.

Fitting a door

In the pack:

Tools required:



Notes

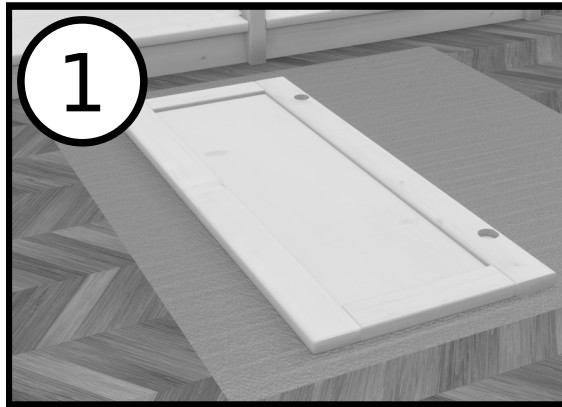
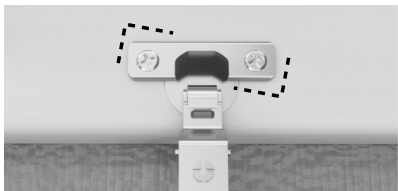
The shelf support holes are offset and will not interfere with the fixing holes.



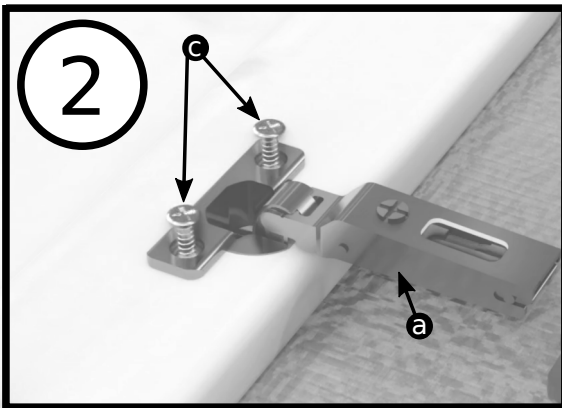
Ensure the unit you are fitting to is square.



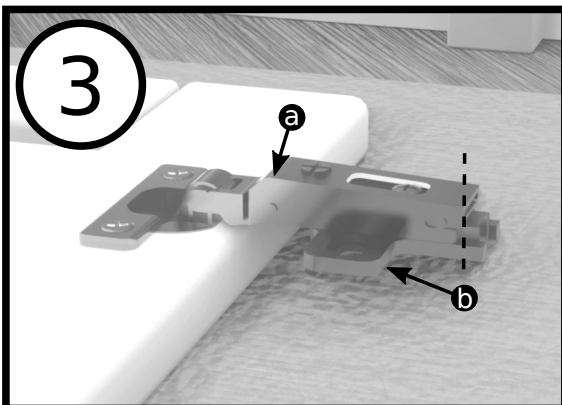
Over-tightening the hinge screws may cause the hinges to go out of square.



Lay the door flat on a soft surface with the hinge recesses facing upwards.

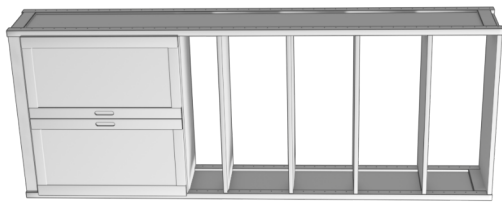


Fix the hinges **a** into place using the screws **c** provided into the pre-drilled holes.

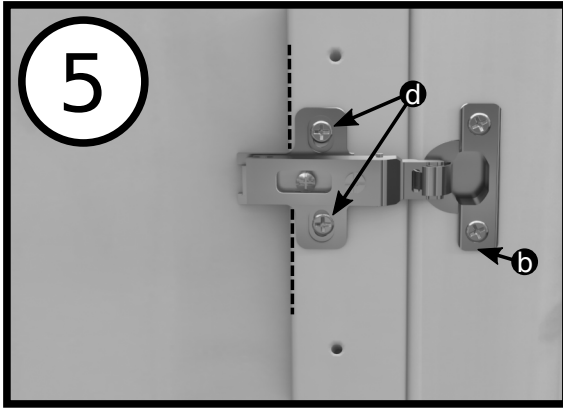
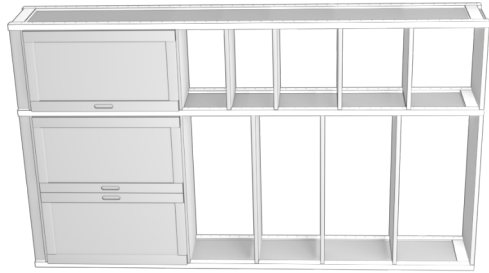


Fit the backplate **b** to the hinge **a** leaving 3 or 4mm sticking out the end.

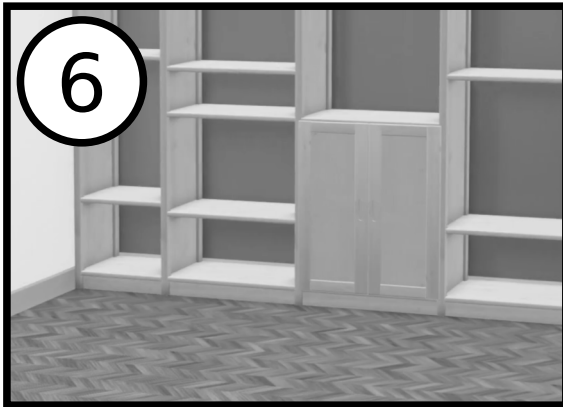
Make sure the backplate **b** is the correct way round as in this picture.



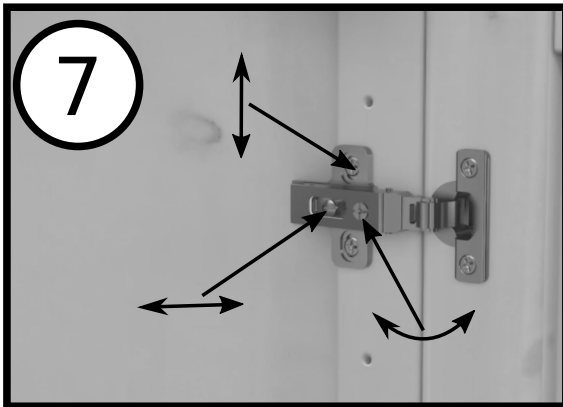
The door should be positioned so that the top of the door is vertically aligned half way up the top shelf.



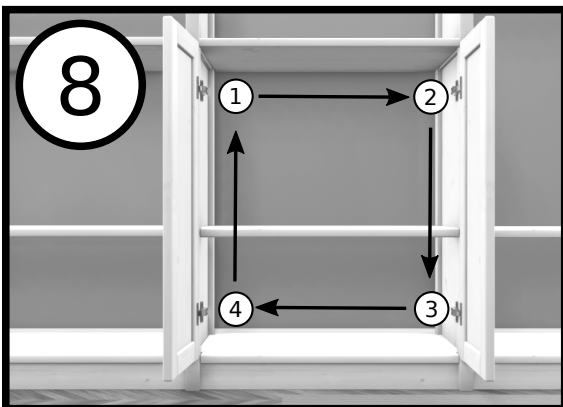
Fix the backplate **b** to the upright using the self tapping screws **d** at the centre of the slots, it should be aligned almost flush with the back of the upright.



Fix the second door into place and your unit is ready to use.



To adjust the position of the door use the adjusting screws.



If adjusting 2 or more doors together ensure all adjusting screws are set to the same position before starting.

Working clockwise or counterclockwise, adjust the screws by a small amount on each hinge until the doors are aligned correctly.